



KONICA MINOLTA

Office systems bizhub C252P and bizhub C352P



bizhub C252P and bizhub C352P

Supreme printers

Competitive powerful quality immediately

The speed of the print engine and the power of the print controller are the most frequently considered aspects of a printer. However it is essential to bring the input paper capabilities, the quality of the printing, the extent of the finishing and the ease of operation into the equation.



The bizhub C252P and bizhub C352P are packaging monochrome and colour speed – 25 ppm/ 35 ppm – with leading edge print technology, workflow maximization, in-line paper management, finished print products, continuous dependability and great savings. It is ideal for the division, for the multi-department provision of sophisticated volume printing or as a welcome addition to any of the bizhub family to provide that extra print capacity.

Konica Minolta's own state-of-the-art print technology assures incomparable quality. The huge input capacity is spread over the up to five trays and accepts A6 to A3+ and a range of special print media. As well as the facility to combine paper products from different trays the bizhub C252P and bizhub C352P are also offering excellent finishing features including booklets and banners.

Quality document creation is achieved whilst also saving time. A variety of formats can be accepted in any one document and at page level there are many options available. The log-in User Box, backed up with various security functions, is the key to the comprehensive document management e.g. the sharing of job settings.

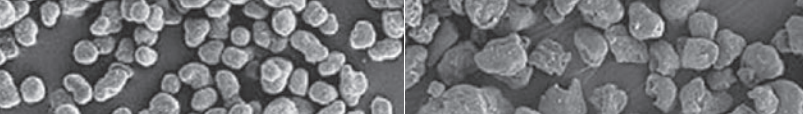
The operation is easy: just set up the job, click on the button, continue the creative work and collect the finished job from the output mailbin upon notification!

The bizhub C252P and bizhub C352P are multi-job printers which make investment sense.

bizhub C252P 

bizhub C352P 





Simitri® polymerised toner

Conventional toner



Leading edge print technology developments

A new investment should not incorporate planned obsolescence. The new print capacity should contain up-to-date technology and a platform capable of integrating future developments.

Konica Minolta is at the forefront of technological innovation in the print field and, in addition, the comprehensive bizhub range software platform, which incorporates the Open Application Interface, is designed to accept new developments.

- The Emperon™ print controller is at the top of its field. Its powerful 64-bit processor assures rapid job processing and its facility to be able to simultaneously rip a waiting document whilst printing virtually assures constant printing. To match various network and application needs both PostScript 3 and PCL 6c are provided. Speed and compatibility are assured.
- Meticulous controls to the in-house production of its innovative Simitri® polymerised toner guarantees unmatched print quality in office documents, and for vibrant colours in marketing material. In addition, as the fixer is oil-free costs are further reduced and there is no oil film on the finished product.



- The stable tandem engine has an enviable speed of 25 ppm/35 ppm, naturally in both monochrome and colour. The one-pass printing outperforms desk-top devices and the conventional four-pass print systems. With less moving parts and the Konica Minolta manufacturing quality the bizhub C252P and bizhub C352P are in the top class for dependability.
- Konica Minolta's own PageScope suite is the all-embracing software tool necessary for effective management. The PageScope Data Administrator provides user management, wide-ranging access control and cost centre management. PageScope Netcare guarantees straightforward set-up procedures and both in-house and remote monitoring.

The bizhub C252P and bizhub C352P are truly fulfilling the printing requirements of an active, creative division.



Fast and foremost workflows



A high volume printer needs to be able to offer wide print variety and finishing coupled with easy accessibility for all users. The bizhub C252P and bizhub C352P enable every office colleague to enjoy their full facilities with an awe-inspiring simplicity of approach. Quality document preparation is both comprehensive and straightforward. Versatile job programming is a joy and storage and recall are so easy that many print jobs can be started with the press of just one button.

- PageScope Workware (option) is an excellent tool for the preparation of documents and it has the sophistication to combine, merge and manage documents.
- The printer driver offers creative document control at page level. The Chapter mode always sets the chapter start on the right hand side of a spread i.e. the odd pages. The five different media input trays can be individually specified e.g. for the inclusion of a coloured blank sheet between chapters in a larger handout or to give each chapter a different colour and duplex is also available. The documents will impress.





- The Easy Set function facilitates the sharing of know-how thus giving everyone access to the best in the division. Typically capable colleagues design document formats which can be stored as Job Settings in the printer driver. They are therefore available for sharing via the network so that everyone can produce commendable documents. This ease of application is also a great time-saver.

- The Direct Print facility guarantees effective workflow. It processes any and all of the formats TIFF, PDF, PCL, Postscript and as the processing takes place within the printer itself the PC is immediately free.

- The PageScope Jobspooler, in conjunction with a 40 GB harddrive (option), provides plenty of storage space for print-ready jobs which can easily be recalled using the web browser. The standard Secure Print function allows a user to send a job for printing with a code attached. The job only proceeds when the code is entered on the machine panel thus ensuring that the user can be present during the printing.



- To ensure that printing is virtually a continuous process all jobs are stored in the ripped format. Once a new job is first in the queue it is ripped whilst the current printing is taking place.
- The Print Status Notifier is a most welcome facility. The user is immediately notified once a job has been completed or if a delay requiring attention has occurred and so there are no unnecessary trips to the device and waste of time.



corner stapling



2-point stapling



two sided printing



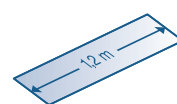
combined mixmedia/mixplex



colour sheet insertion, report



booklet



banner printing



offset sorting



Enhanced output variety

A large workgroup requires a high volume colour and monochrome print device, capable of delivering a wide variety of quality paper products. The flexibility of input media and finishing should generate considerable time savings and both the investment and running costs need to be low.

The ingredients for top-quality print products with professional touch are available in abundance in the economical bizhub C252P and bizhub C352P. The splendid Konica Minolta print technology and print functions are complemented with comprehensive paper management.

- A wide range of finishing, including stapling, punching and thick covers for centre-stapled folded booklets, is available to heighten the impact of the print product and to make considerable savings in staff time. Manual hand finishing, a low-level wasteful activity, has been eliminated. A special feature creates banners up to 1.2 m long, which is very useful for presentations or large wall-mounted tables and it completes the rich product range.
- The bizhub C252P and bizhub C352P are fast and productive. Therefore print jobs can get mixed up. However the output mailbins separate out the jobs to make it easy to pick up the correct output.
- The large input capacity of up to 3,350 sheets is spread over the up to five input trays, each of which can contain a different medium. Any size between A6 and A3+ (oversize to print full A3) and any weight up to 256 g/m² will glide through the machine. Both printers are also taking duplex and special items such as envelopes, labels and OHP in its stride.

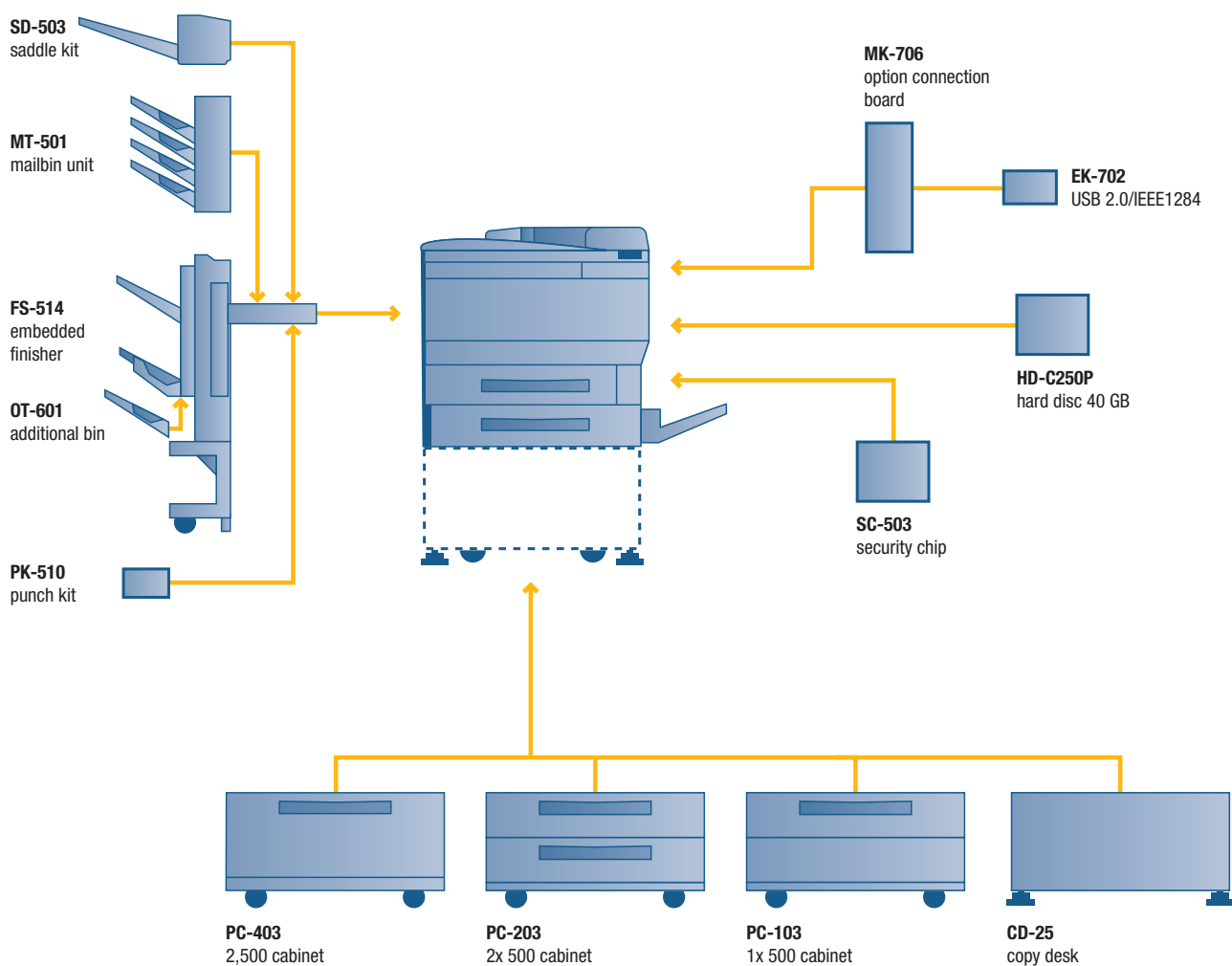
It is amazing how the compact bizhub C252P and bizhub C352P multi-purpose printers are giving impressive print output variety of the very best quality whilst revolutionising the productivity of the office.

→ Print Authentication

Unallowed access to the printer and therefore unnecessary costs are prevented through the assignment of specific accounts and rights to up to 1,000 users. In addition the correct user name and password must be entered to activate printing. The Windows Active Directory is supported.



Your options at a glance





KONICA MINOLTA

Simitri



EPA POLLUTION PREVENTER



Technical specifications

Printer specifications

Printing system

Electrostatic laser
Tandem, indirect

Toner system

Simitri® polymerised toner

Print speed A4

Colour/Mono up to 25 ppm (C252P)
Colour/Mono up to 35 ppm (C352P)

Print speed A3

Colour/Mono up to 13 ppm (C252P)
Colour/Mono up to 17 ppm (C352P)

1st print time (A4)

Colour 11.7 sec. (C252P)
Mono 8.4 sec. (C252P)
Colour 8.5 sec. (C352P)
Mono 6.5 sec. (C352P)

Warm-up time

Approx. 110 sec. (C252P)
Approx. 72 sec. (C352P)

Print resolution

1,800 x 600 dpi

Gradation

256 gradations
6 BIT Contone

Multi-print

1-999

Print features

Banner printing – paper size of max. 1,200 x 297 mm
Secure Print* – code protected
Overlay
Mixmedia – tray setting per page
Mixplex – simplex/suplex setting per page
Front/Back cover mode
Custom paper sizes A6 – A3+
Watermark* – standard and editable
Easy Set – storeable print settings
Printjob recall*
Direct Print and HotFolder for PCL, PS, PDF and TIFF

Controller CPU

PowerPC 750FX
64 BIT technology
466 MHz (C252P)
600 MHz (C352P)

Page description language

PCL 6c (PCL 5c + XL2.1)
PostScript 3

Operating systems

Windows 98/ME/NT4.0/2000/XP/XP64
Macintosh 9.x/10.x
Server NT4.0/2000/2003
Unix/Linux/Citrix

Interface

10-Base-T / 100-Base-TX Ethernet
Parallel IEEE 1284 (optional)
USB 2.0 (optional)

System specifications

System memory

1,024 MB

System hard disc (optional)

40 GB

Paper size

A6-A3 full bleed
Customised paper sizes
Banner paper max. 1,200 x 297 mm

Paper weight

60-256 gsm

Paper input capacity

Standard: 850 sheets
Max.: 3,350 sheets

Paper output capacity

Up to 1,200 sheets

Automatic duplexing

A5-A3 full bleed
60-256 gsm

Finishing modes (optional)

Offset, group, sort, staple, punch,
centre-fold, booklet, mailbin sort

Print volume (monthly)

Recommended: 25,000 (C252P)
Max.: 40,000 (C252P)
Recommended: 35,000 (C352P)
Max.: 55,000 (C352P)

Power consumption

220-240 V / 50/60Hz
Less than 1.5 KW (system)

System dimensions (W x D x H mm)

653 x 712 x 601 (C252P)
648 x 711 x 601 (C352P)

System weight

Approx. 76 kg (C252P)
Approx. 81 kg (C352P)

System features

Security

ISO 15408 EAL3*

Accounting

Up to 1,000* User Accounts
Active Directory support
(user name + password)
User function access definition

Software

PageScope NetCare
PageScope Data Administrator
PageScope JobSpooler
PageScope Workware (Trial)
Direct Print Utility
Print Status Notifier

*requires optional HDD

All specifications relating to paper capacity refer to A4-size paper of 80 gsm quality.

All specifications relating to scanning, copying or printing speeds refer to A4-size paper that is scanned, copied or printed crosswise in multipage, simplex mode. Some of the product illustrations contain optional accessories.

Konica Minolta does not warrant that any prices or specifications mentioned will be error-free.

Specifications are subject to change without notice.

Microsoft, Windows and the Windows logo are trademarks, or registered trademarks, of Microsoft Corporation in the United States and/or other countries.

All other brand and product names may be registered trademarks or trademarks of their respective holders and are hereby acknowledged.

Printed in Germany on chlorine-free bleached paper.

Your Konica Minolta Business Solutions Partner:



Konica Minolta
Business Solutions Europe GmbH
Europaallee 17
30855 Langenhagen • Germany
Tel.: +49 (0) 511 74 04-0
Fax: +49 (0) 511 74 10 50