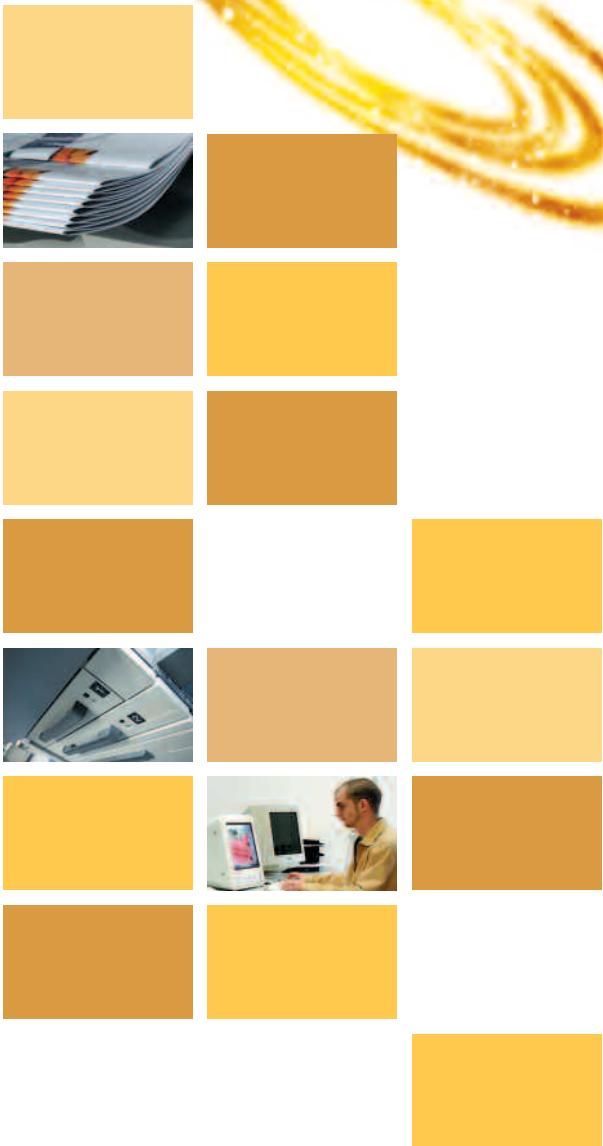




KONICA MINOLTA

Office system bizhub C450P



bizhub C450P

It's more than just a printer



More than **you imagined**

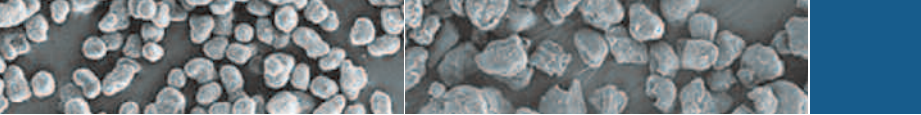
You know that a fast, high-volume black-and-white printer would be important for your company – but you would also like to take advantage of high-quality colour printing to improve your corporate communications. You think that in-house colour printing would be too expensive – but that an affordable colour printer would be too slow for your business needs. Maybe you are thinking about getting two different devices to do these jobs – but you don't have enough space or enough print jobs to justify the costs.

No more “buts”: Konica Minolta gives you what you really want. A printer that does both.

The bizhub C450P lets you enjoy the best of both worlds. Konica Minolta's latest printing innovation combines colour and black-and-white printing in a single cost-effective system that offers revolutionary speed, unmatched quality and comprehensive functionality.

bizhub C450P 





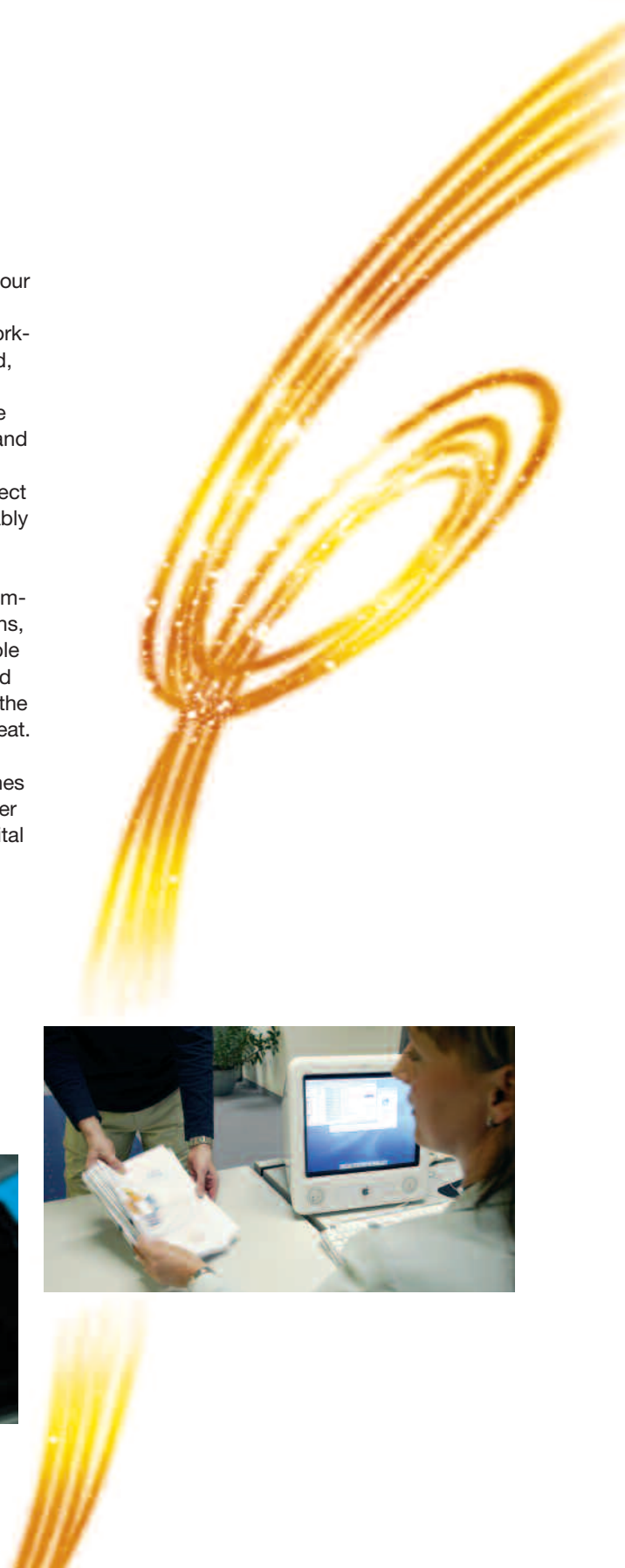
Simitri™ polymerised toner

Conventional toner

➔ **Innovative technology.**
Affordable, superior quality

The bizhub C450P produces an unrivalled 35 colour and 45 black-and-white pages per minute, far surpassing the production speed of standard work-group and floor printers. Achieved with a refined, single-pass tandem engine, Konica Minolta's imaging expertise creates a definitive advantage in processing speeds. Proven LED technology and Konica Minolta's own innovative Simitri™ toner dependably deliver excellent image quality. Indirect printing ensures print consistency and also reliably eliminates image distortion.

Complete with flexible media handling and a comprehensive selection of standard finishing options, the bizhub C450P now offers many indispensable functions not previously available in a colour and black-and-white printer. In addition to its speed, the printing costs of the bizhub C450P are hard to beat. Konica Minolta's exclusive Simitri™ polymerised toner not only perfectly reproduces the finest lines and smoothest gradations but also reduces toner consumption to the cost-per-print level of a digital copier.



More than meets the eye

→ Emperon™. The latest in printing functionality

The integrated Emperon™ print controller of the bizhub C450P features all-inclusive printing functionality and includes both PCL 6c and PostScript 3 as standard. Even complex print jobs are now easy and straightforward with Emperon's™ intuitive user interface.

- The powerful 64 Bit CPU ensures consistent, superior printing performance and high-speed job processing. The standard 1,024 MB memory facilitates rapid print production, while Emperon's™ upgradeable memory can add an optional 40 GB hard drive for the convenient storage and recall of regularly needed print jobs.
- The bizhub C450P's wide range of features accelerates and enhances document production. The mixmedia function, for example, makes it easy to choose between various paper types for different pages in a single print job. Likewise, it lets you combine single-sided and double-sided pages without requiring any manual intervention.
- To save time and increase office productivity, frequently needed print jobs can either be stored in a personal box for confidential documents or in a public box that can be accessed by the entire team or company. Reprinting these jobs is ultra-fast and efficient because the re-ripping of print data is no longer required. HDD required.
- As a further feature, Konica Minolta's extensive PageScope software solution facilitates the set-up, administration and management of the bizhub C450P.

Don't be surprised if the small desktop printers in your company are no longer in demand.



➔ **bizhub. Keeps your data safe and printing costs in check**

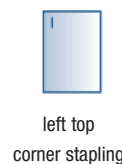
If you're concerned about data security and cost transparency, you can now rest assured: the flexible functionality of the bizhub C450P provides efficient tools for cost allocation and controlling. And Konica Minolta's comprehensive security functions are also included in this printer.

■ All companies strive for greater cost transparency, and that's where the comprehensive cost-centre management system of the bizhub C450P will really come in handy. It is highly effective in calculating the pages produced by individual users or departments, thus facilitating the allocation of costs to specified accounts. This system can be conveniently set up via the network with the PageScope Data Administrator.



■ In addition, the enhanced User Authentication feature not only allows the registration of up to 1,000 users, but also to define who can access certain functions like colour printing. At the same time, it lets you specify volume limits for individual users or user groups, which really helps to keep printing costs in check.

■ And because document integrity is vital in many environments, we've equipped the bizhub C450P with easy-to-use secure printing functions that assure confidentiality for your sensitive information. Along with various other security features, the bizhub C450P offers you complete protection in accordance with ISO 15408 EAL 3.





More than just a printer

→ Beyond printing. Finishing included

Versatile, copier-quality finishing capabilities were previously unavailable in the printer world. With its extensive range of output options, the bizhub C450P can now offer these comprehensive finishing functions. And its short, straight, internal paper path ensures impressive media flexibility. This powerful combination increases the level of professional document production to that of pure sophistication.

The range of the bizhub C450P's finishing options is seemingly limitless: from offset sorting (the shifting of print sets), corner stapling, book stapling (two staples on the left) and 4-hole punching, to booklet finishing for the automatic production of centre-stapled and folded booklets. These options are all available in the choice of two finisher alternatives.

The bizhub C450P can process print media up to 256 g/m² from all paper sources as well as its automatic duplex unit, an unequalled feature in this printer class. For improved versatility and

efficiency, the bizhub C450P also prints on envelopes, OHP films, address labels, logo stickers and other specialised media. All customised paper sizes between A6 and A3+ (311 x 457 mm) can be fed. Take advantage of the banner-printing feature that makes it possible to print on special paper with a width of up to 311 mm and a length of up to 1.2 metres. Printing banners on thicker paper weights of between 127 g/m² and 209 g/m² enhances your creative potential to create individualised displays and other unique point-of-sale materials. (Banner printing available from January 2006).

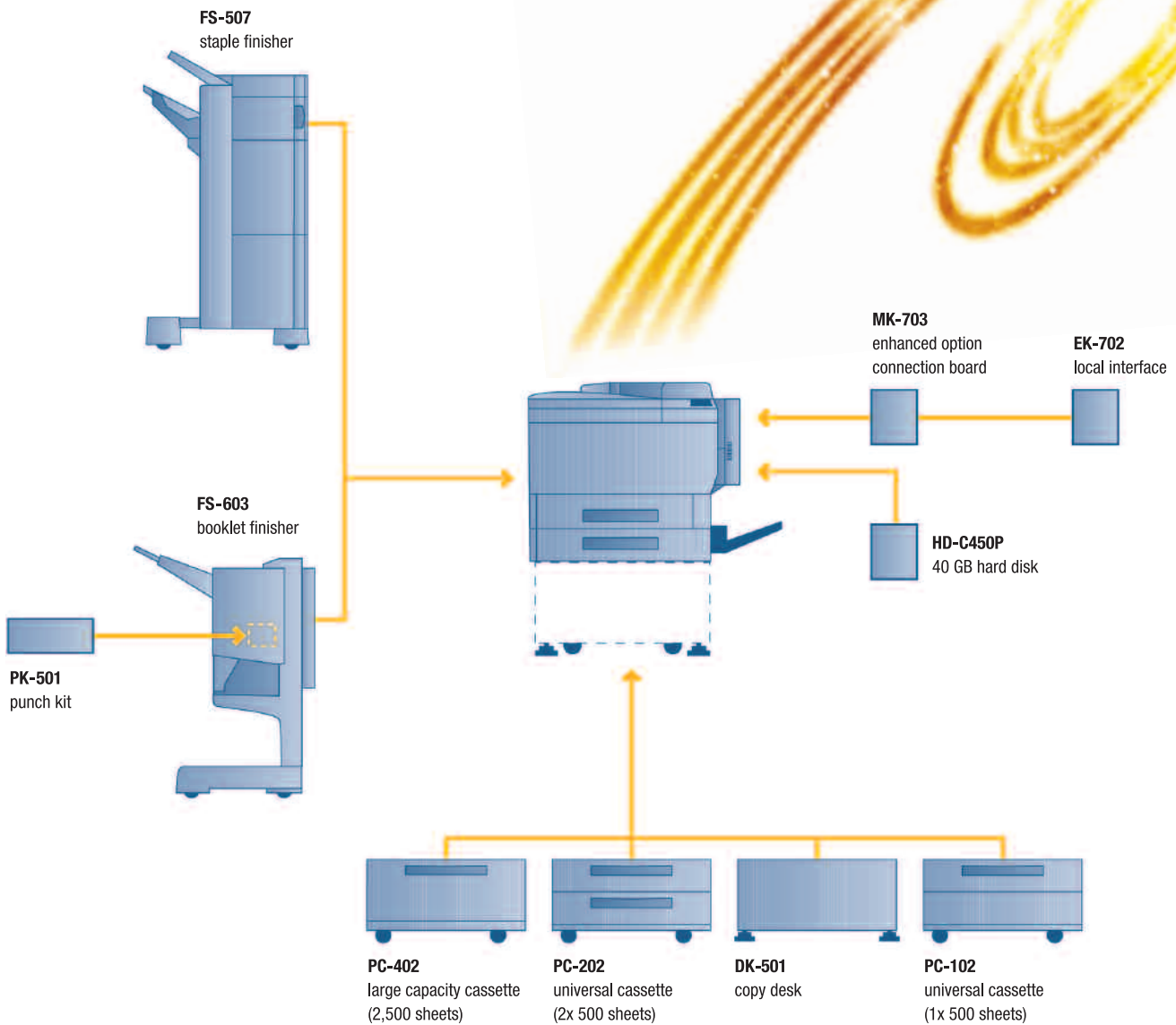
The search is over. With its distinctive capabilities, the bizhub C450P now provides comprehensive, high-quality colour and black-and-white printing in a single, cost-effective system.

The bizhub C450P. Much more than just a printer.





Enhanced configuration options





KONICA MINOLTA

Simitri



CITRIX



Technical specifications

Printer specification

System

Tandem type
Indirect electrophotographic
LED technology

Toner system

Simitri™ polymerised toner

Print speed A4

Colour up to 35 ppm
Mono up to 45 ppm

Print speed A3

Colour up to 19 ppm
Mono up to 24 ppm

1st print time

Colour 11.5 sec. (A4)
Mono 8.5 sec. (A4)

Warm-up time

Less than 99 sec.

Print resolution

600 x 1,800 dpi

Gradation

256 gradations

Multiprint

1–999

Print features

Banner printing – paper size of max.
1,200 x 311 mm
Secure print – code protected
Overlay
Mixmedia – tray setting per page
Mixplex – simplex or duplex per page
Offset sorting – set shifting for output
Front/back cover mode
Customised paper sizes – A6 to A3 full bleed
Watermark* – standard and editable

Gloss print
Easy set – storable print settings
Print job recall*

Controller CPU

PowerPC 750FX @ 600 MHz
based on 64 Bit technology

Page description language

PCL 6c (PCL 5c + XL 2.1)
PostScript 3

Operating systems

Windows 98/ME/NT4.0/2000/XP
Macintosh 9.x/10.x
Server NT4.0/2000/2003
Unix/Linux
Citrix

Interface

10/100-Base-T Ethernet
USB 2.0 (optional)
IEEE 1284 (optional)

System specification

System memory

1,024 MB

System hard disk (optional)

40 GB

Printable size

A6–A3 full bleed (311 x 457 mm)
Customised paper sizes

Paper weight

64–256 g/m²
from all paper trays

Paper input capacity

Standard: 900 sheets
Max.: 3,400 sheets

Output capacity

Up to 3,250 sheets

Finishing (optional)

Corner stapling
2x side stapling
4-hole punching
Booklet (saddlestitch + half-fold)

Automatic duplexing

A5–A3 full bleed
64–256 g/m²

Power consumption

220–240 V / 50 Hz
1.5 kW or less

System dimension (W x D x H mm)

706 x 765 x 586

System weight

Approx. 89 kg

System features

Accounting

1,000 user accounts
for cost accounting*
(100 user accounts standard)

Software

PageScope NetCare
PageScope NetSetup
PageScope Data Administrator
PageScope JobSpooler

*requires HDD (optional)

All specifications relating to paper capacity refer to A4-size paper of 80 g/m² quality.

Some of the product illustrations contain optional accessories.

Konica Minolta does not warrant that any prices or specifications mentioned will be error-free.

Specifications are subject to change without notice.

Microsoft, Windows and the Windows logo are trademarks, or registered trademarks, of Microsoft Corporation in the United States and/or other countries.

All other brand and product names may be registered trademarks or trademarks of their respective holders and are hereby acknowledged.

Printed in UK.

Konica Minolta
Business Solutions (UK) Ltd

Direct Operations
Miles Gray Road, Basildon
Essex SS14 3AR
Tel: 0800 833864
Fax: 01268 282480
www.konicaminolta.co.uk